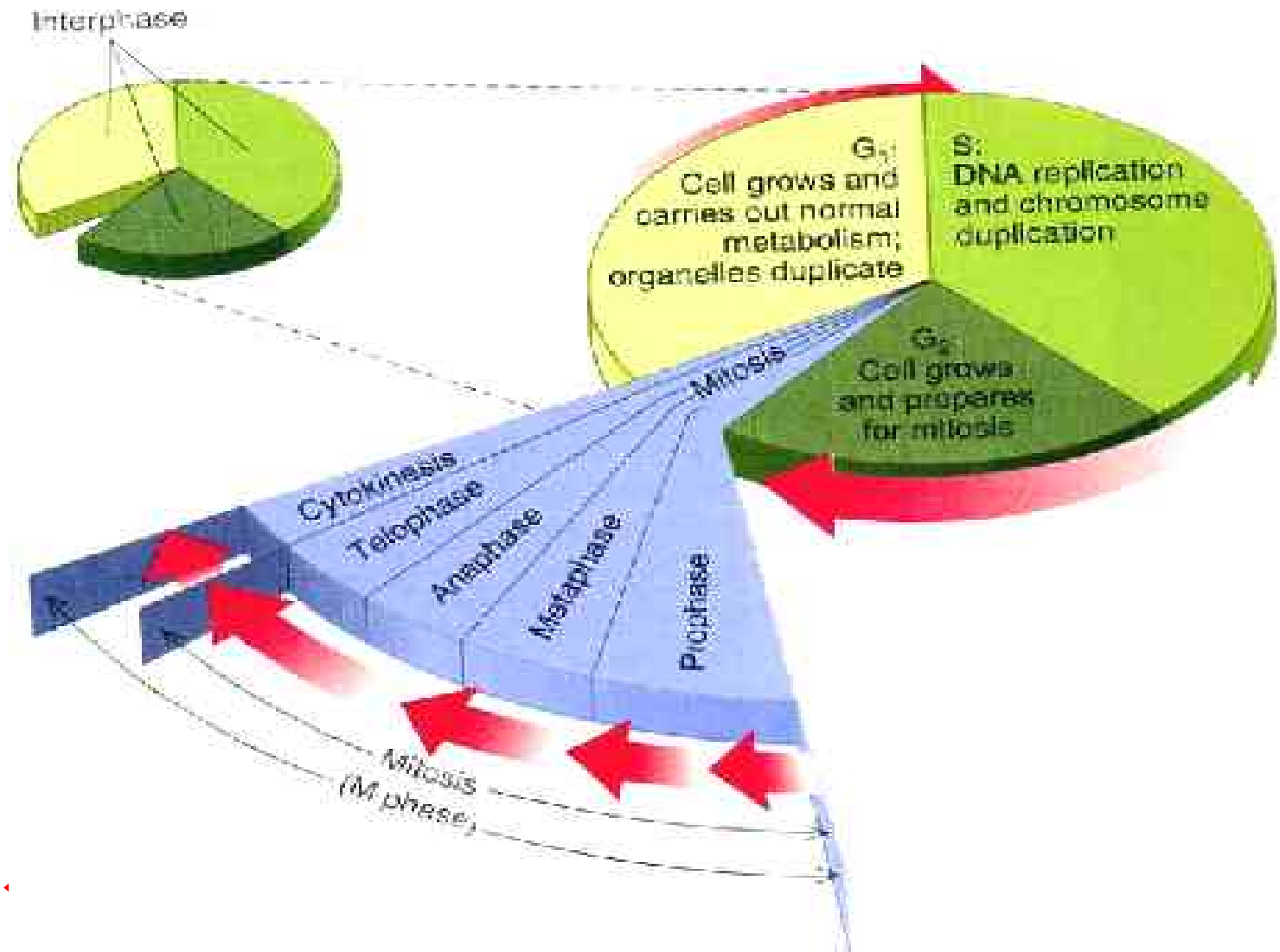


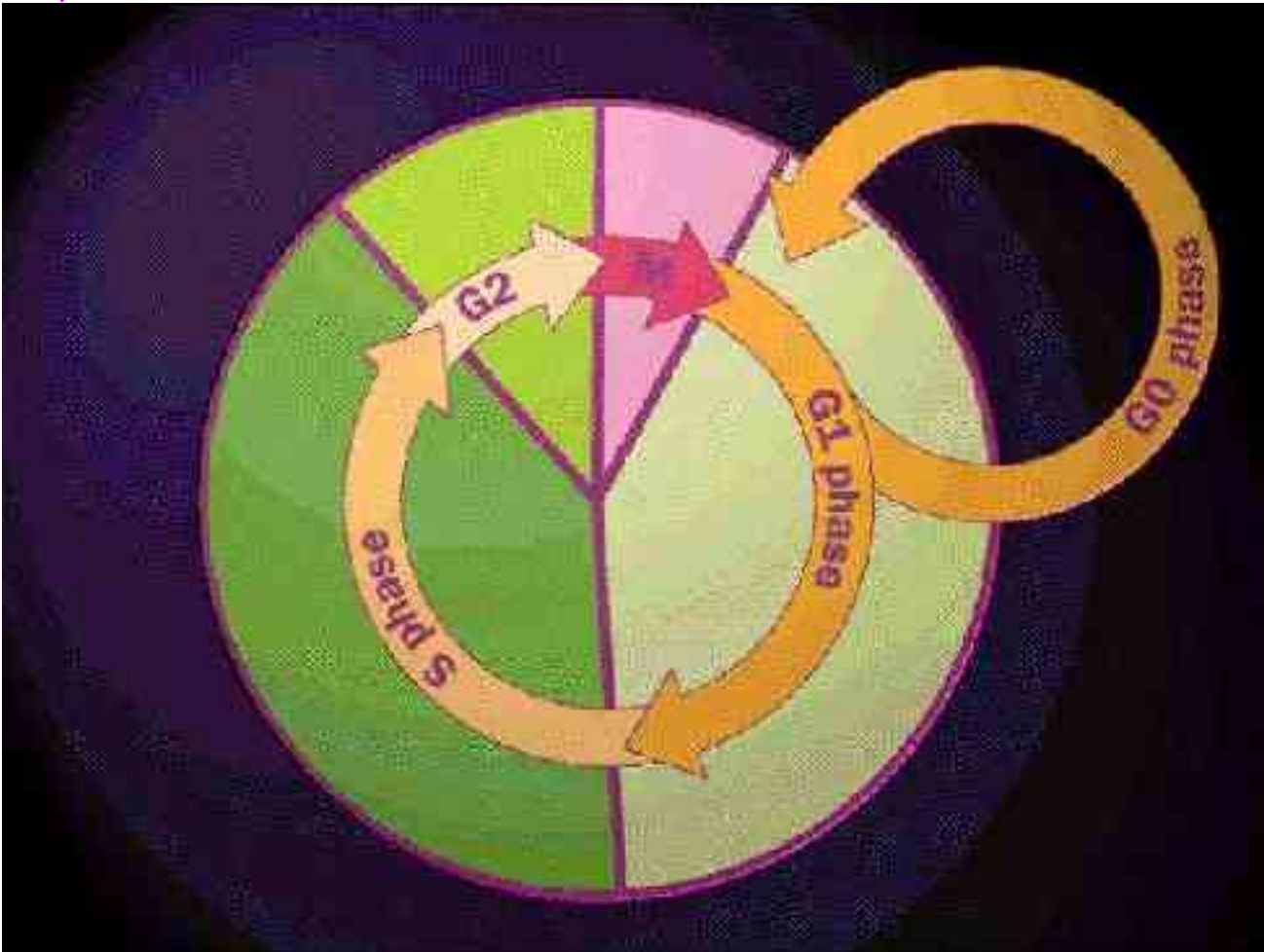


# *MITOSIS I*

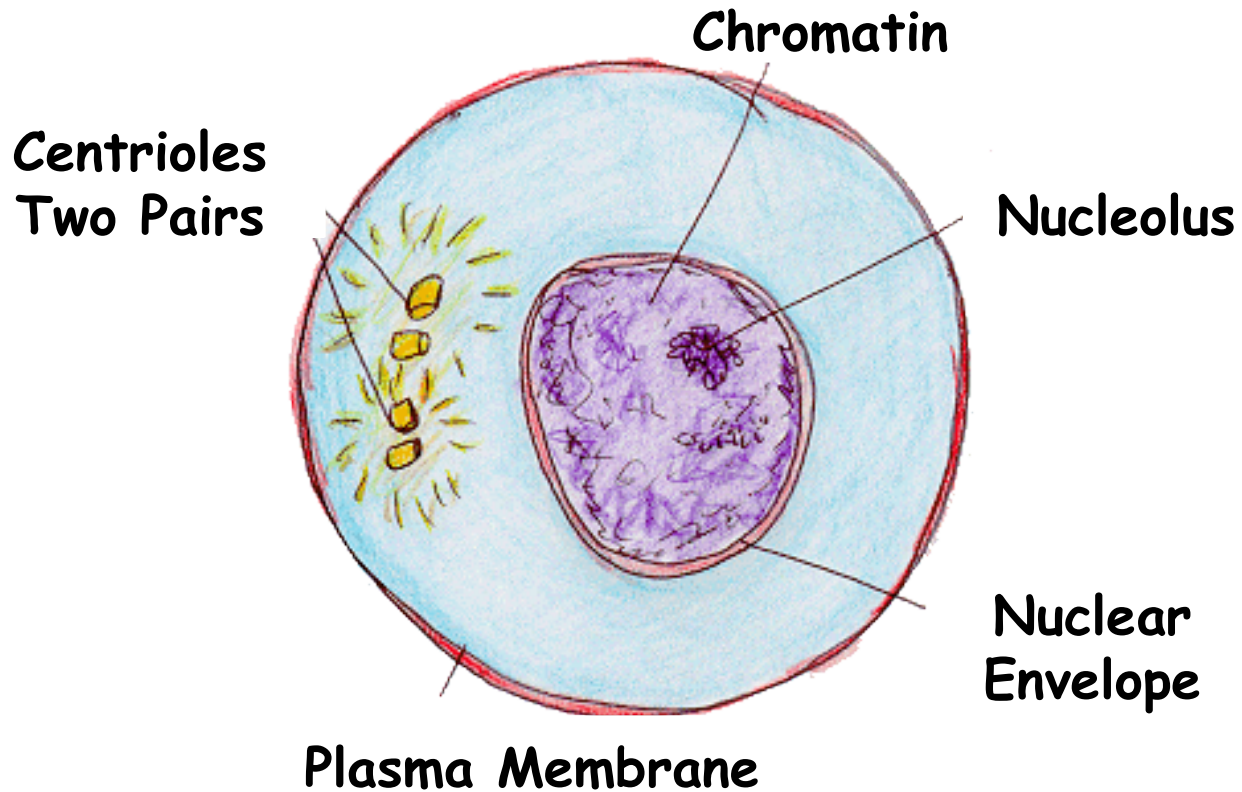
# CELL CYCLE



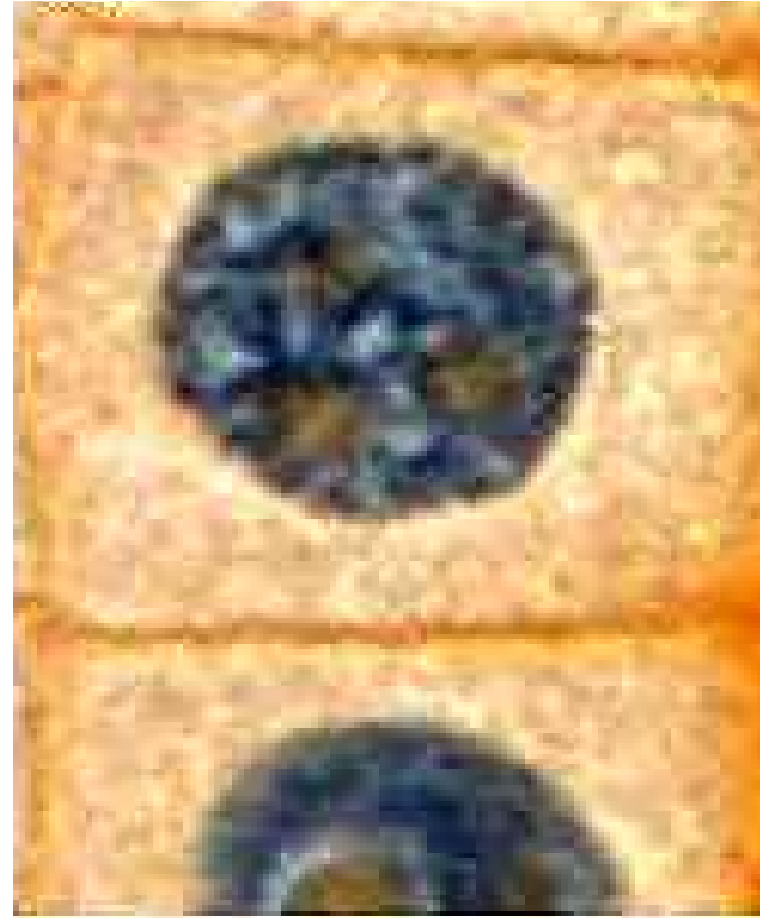
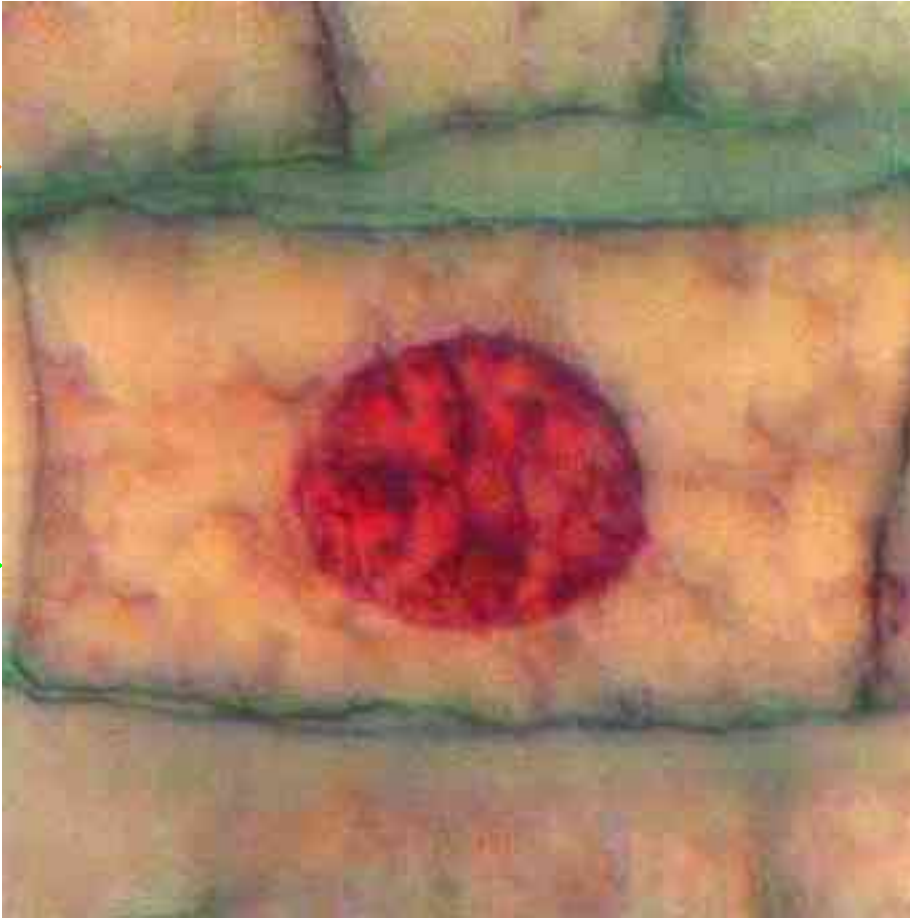
# CELL CYCLE



# *INTERPHASE*



# *INTERPHASE*



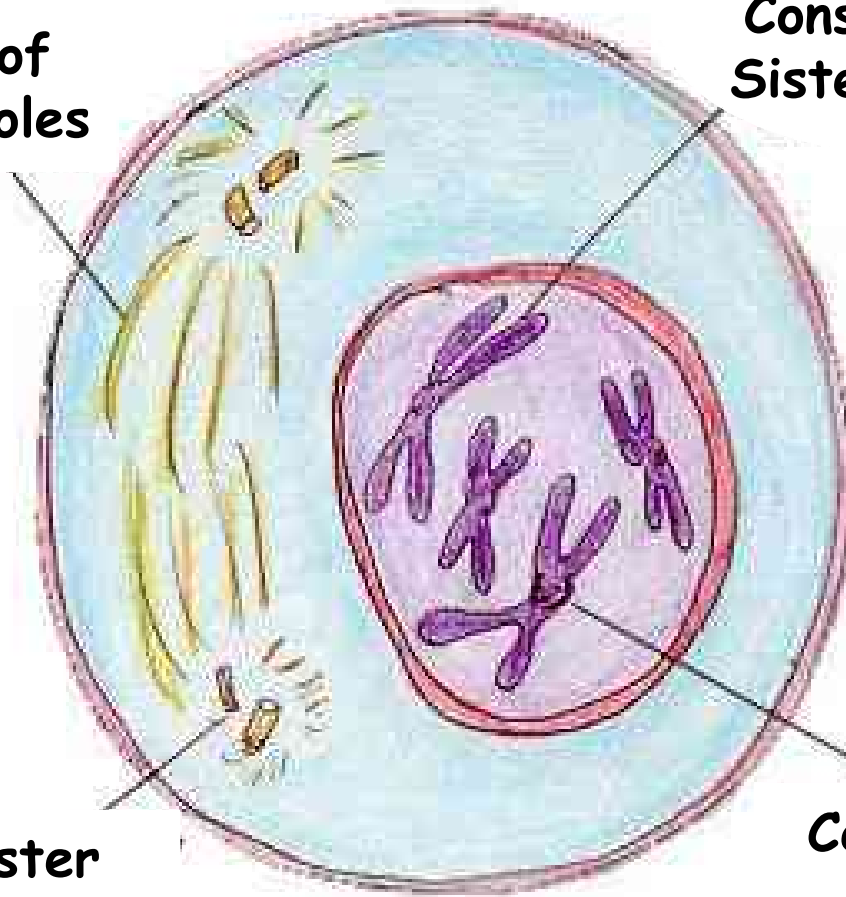
# ***PROPHASE***

**Pair of Centrioles**

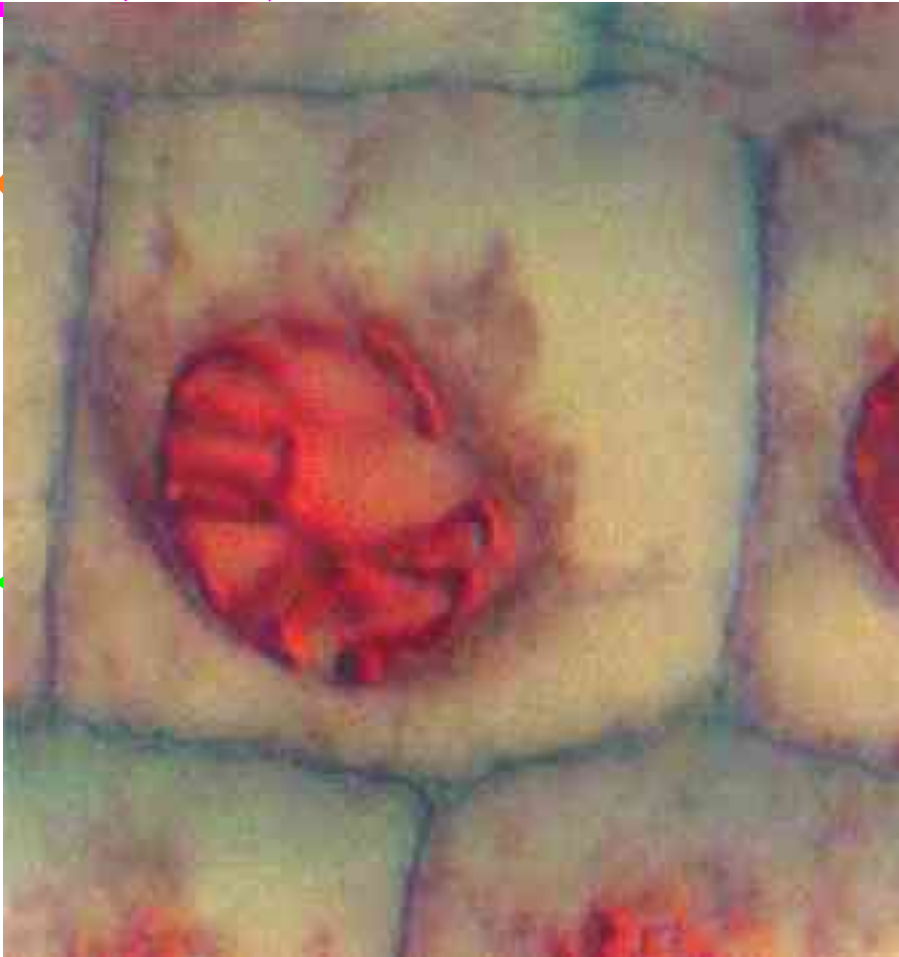
**Chromosome  
Consisting Of Two  
Sister Chromatides**

**Aster**

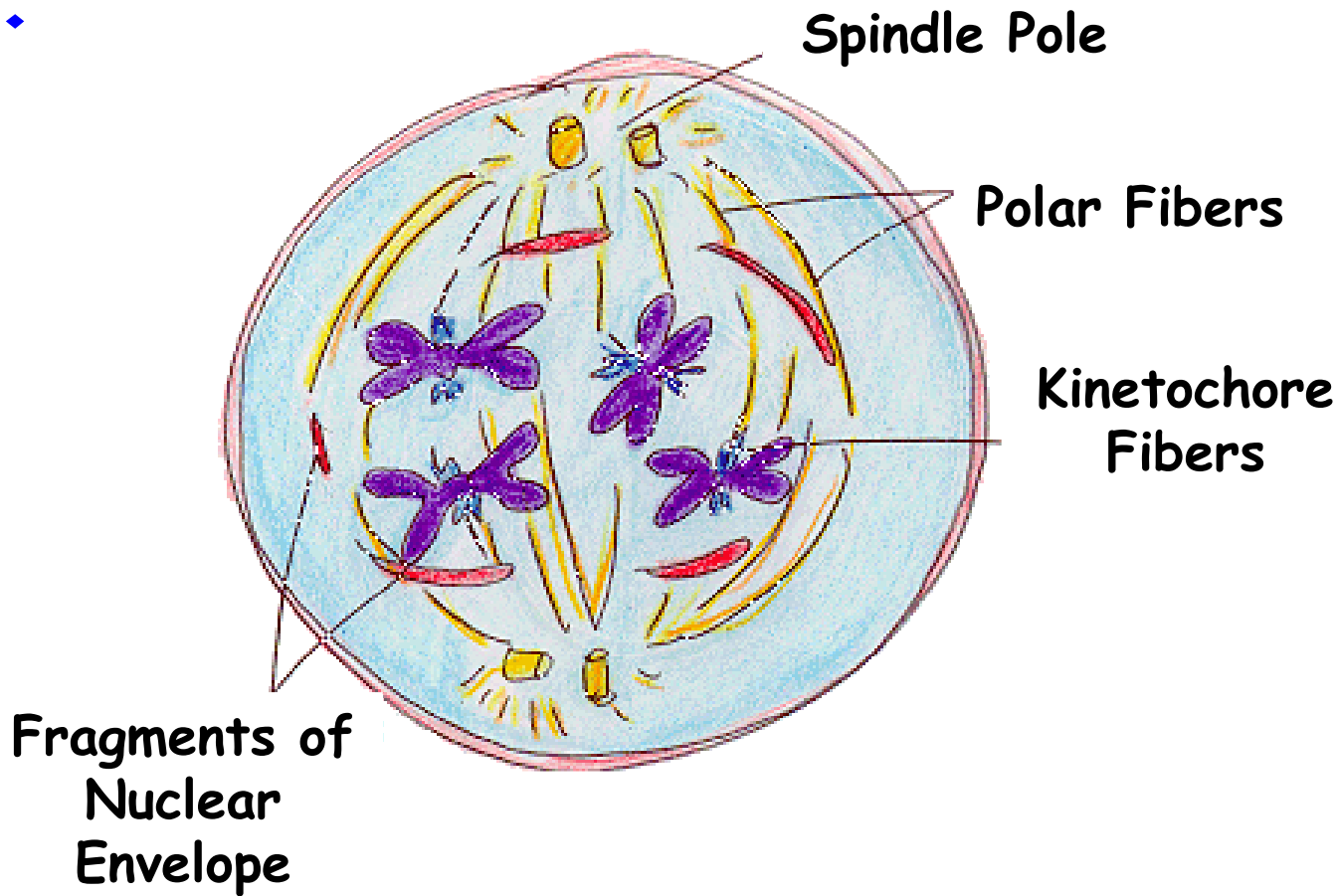
**Centromere**



# *PROPHASE*



# PROMETAPHASE

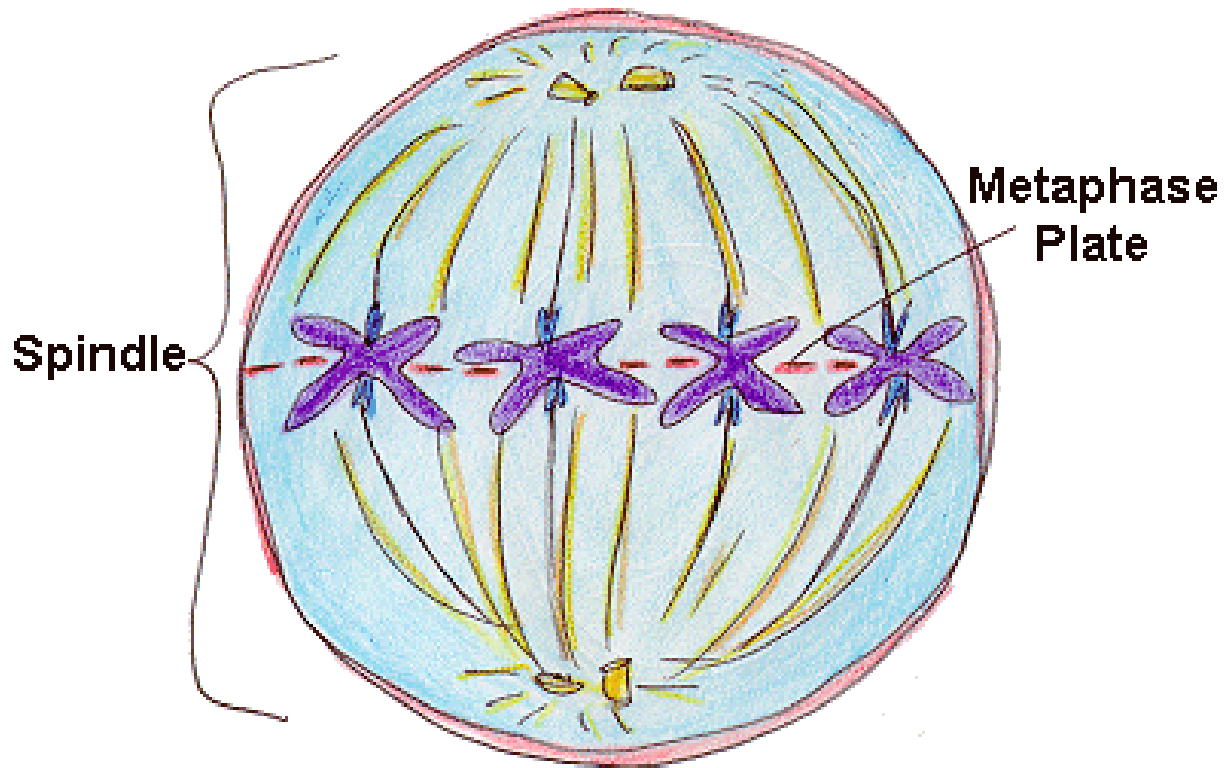




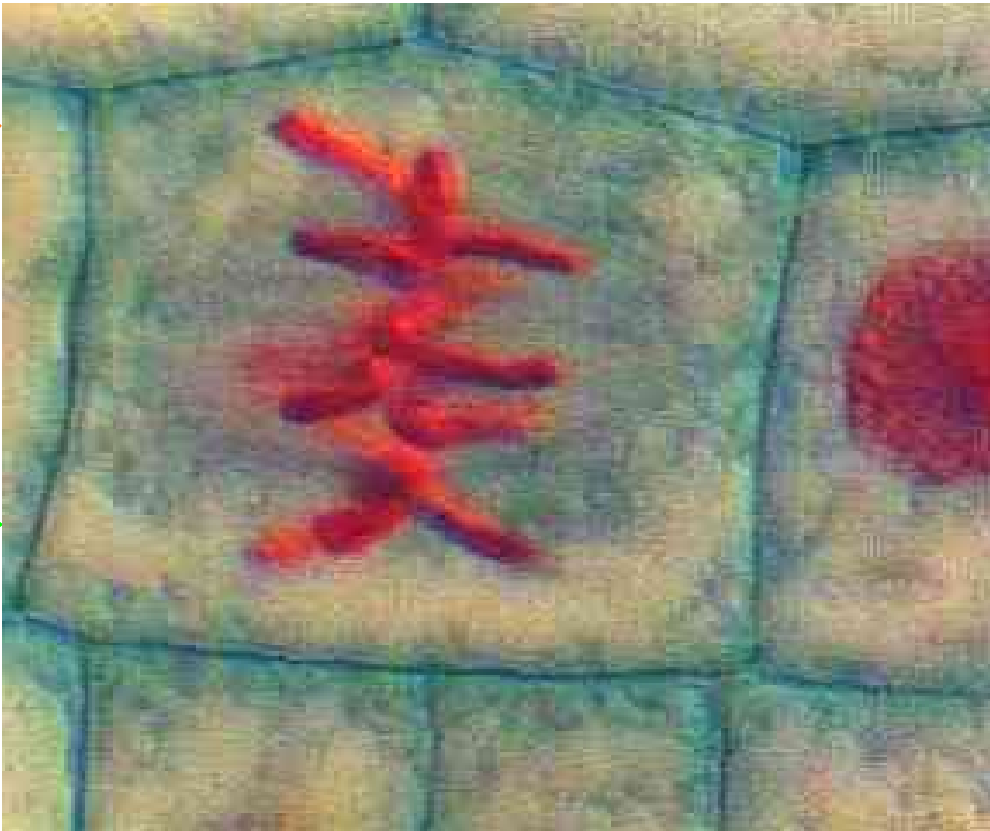
# *PROMETAPHASE*



# ***METAPHASE***

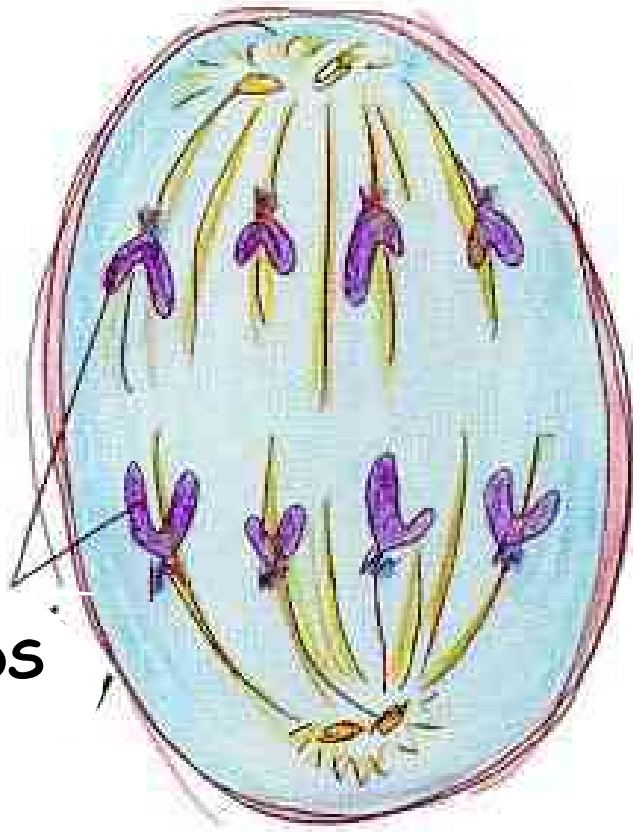


# ***METAPHASE***

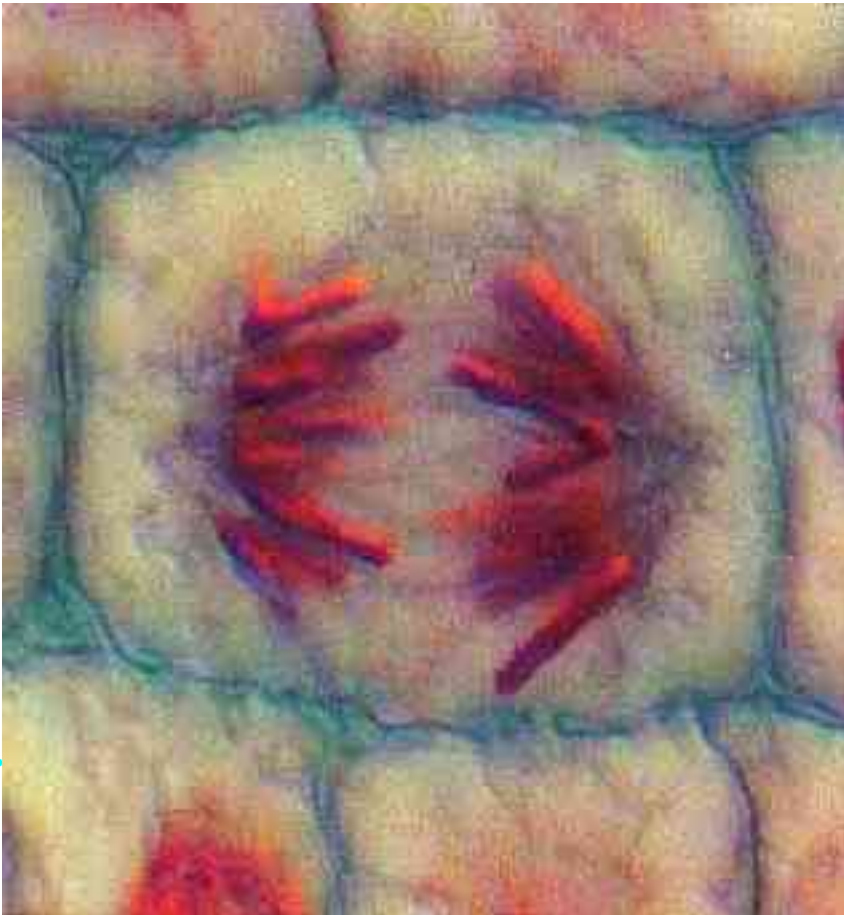


# ***ANAPHASE***

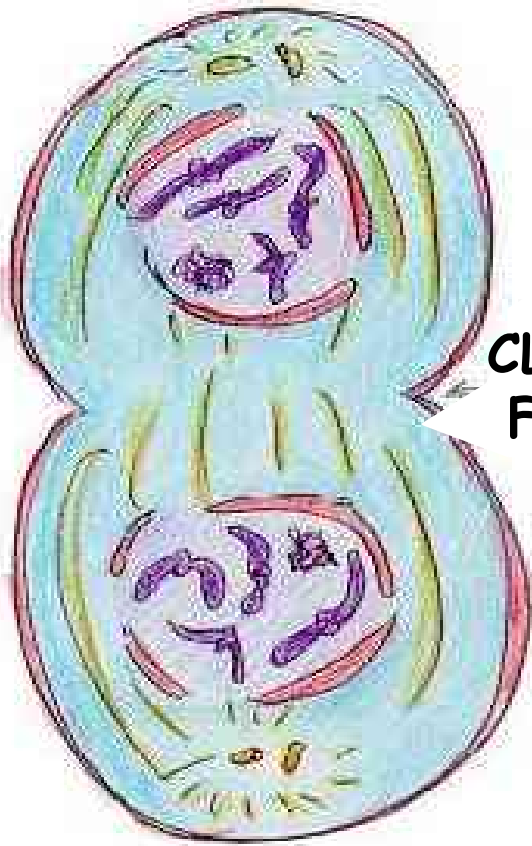
**SISTER  
CHROMATIDS**



# ***ANAPHASE***

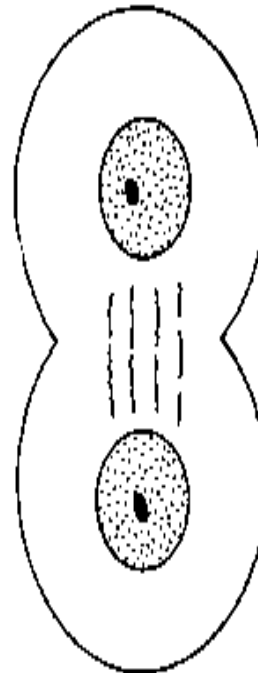


# TELOPHASE

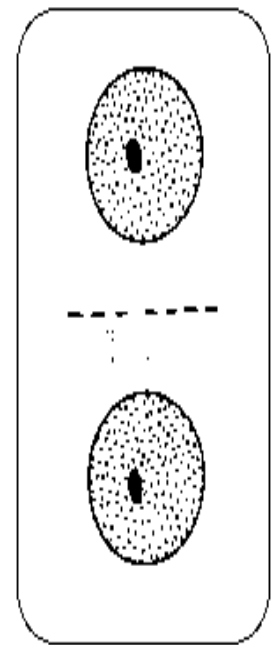


CLEAVAGE  
FURROW

ANIMAL CELL



PLANT CELL



# *TELOPHASE*

