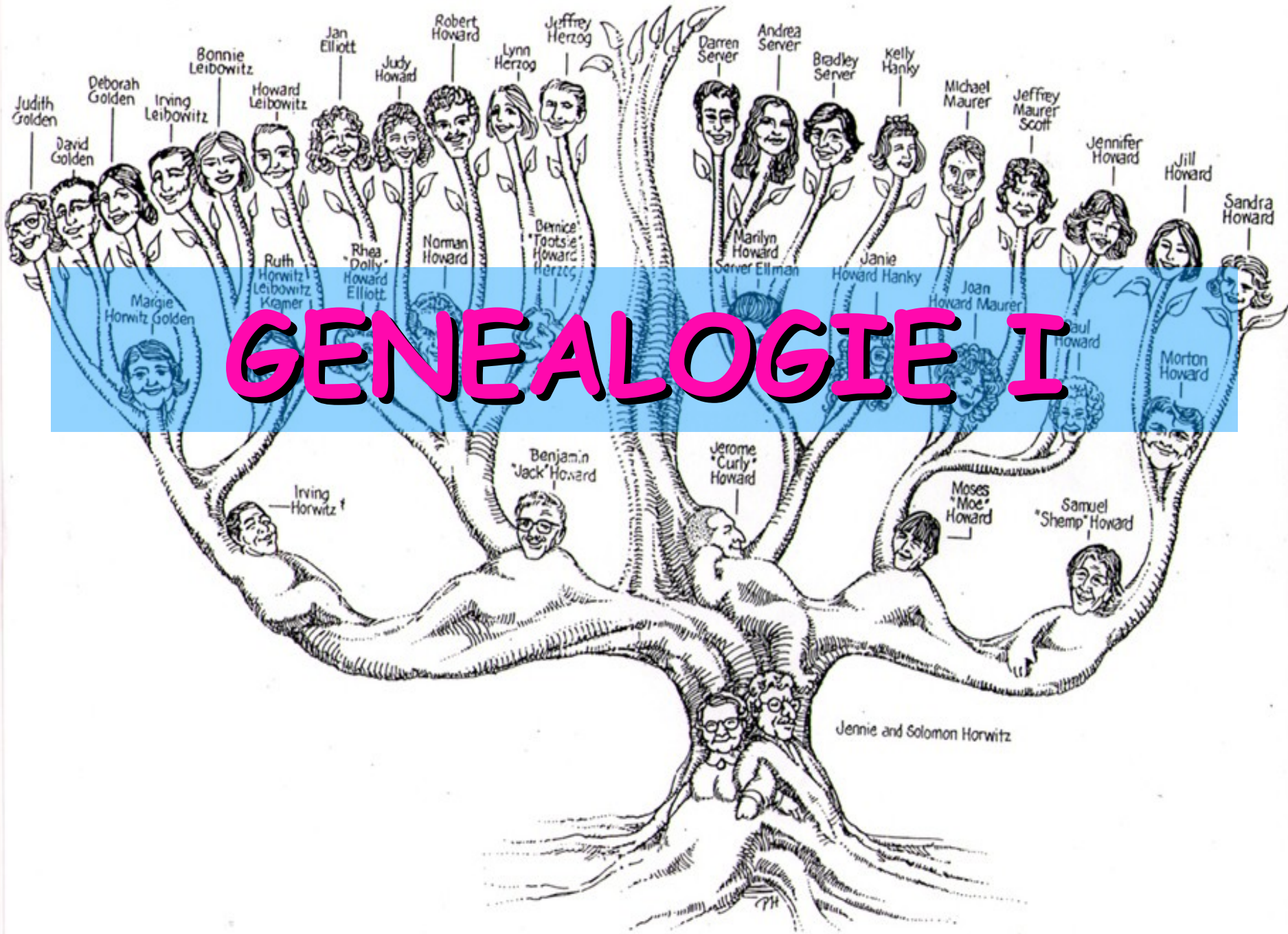




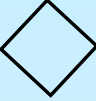





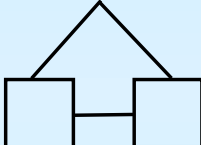

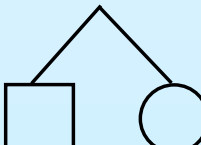
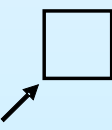

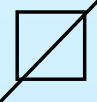



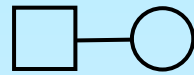


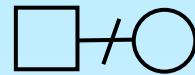
GENEALOGIE I



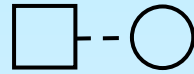
	muž		postižený muž
	žena		postižená žena
	osoba neurčeného pohlaví		postižený neurčeného pohlaví
	tři muži		muž heterozygot
	dvě ženy		žena heterozygot
	jednovaječná dvojčata		žena nosička
	dvouvaječná dvojčata		proband
	adoptován do rodiny		zemřelý muž
	adoptován z rodiny		prenatální úmrtí
			potrat



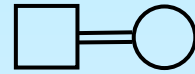
manželský
vztah



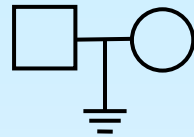
rozvod



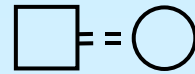
nemanželský
vztah



příbuzenský
sňatek

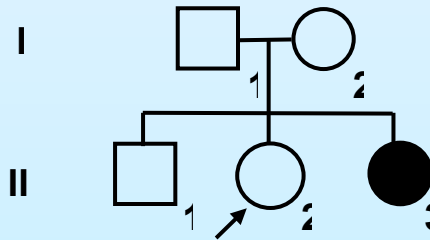


sterilita

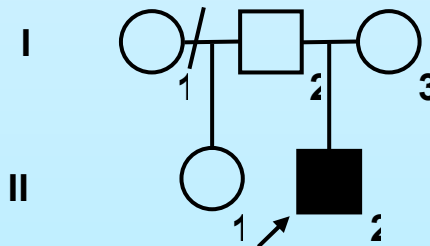


příbuzenský
nemanželský
vztah

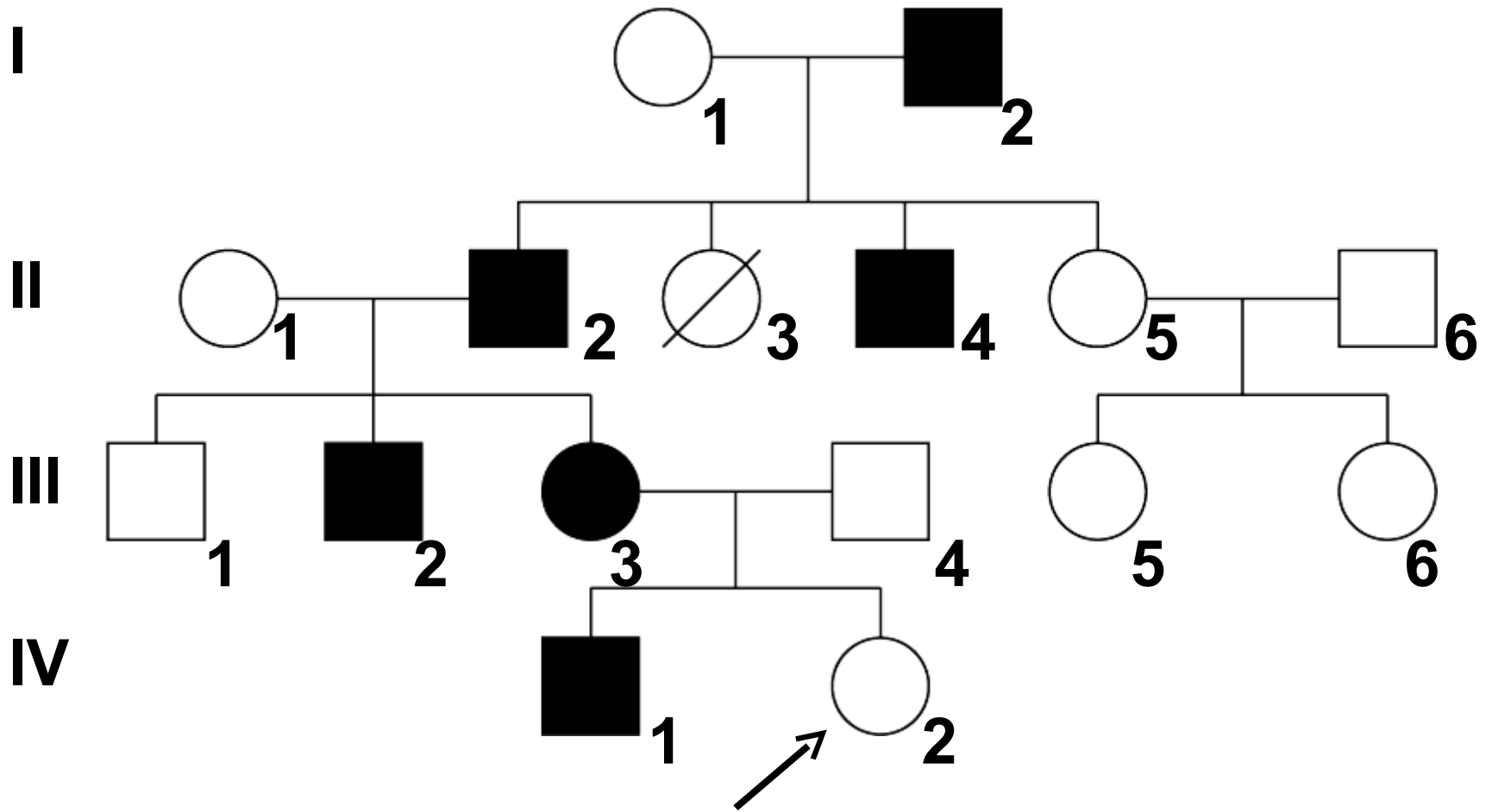
Značení generací (I,II) a osob v rodokmenu (1,2,3)



sourozenectvo
II/2 je proband

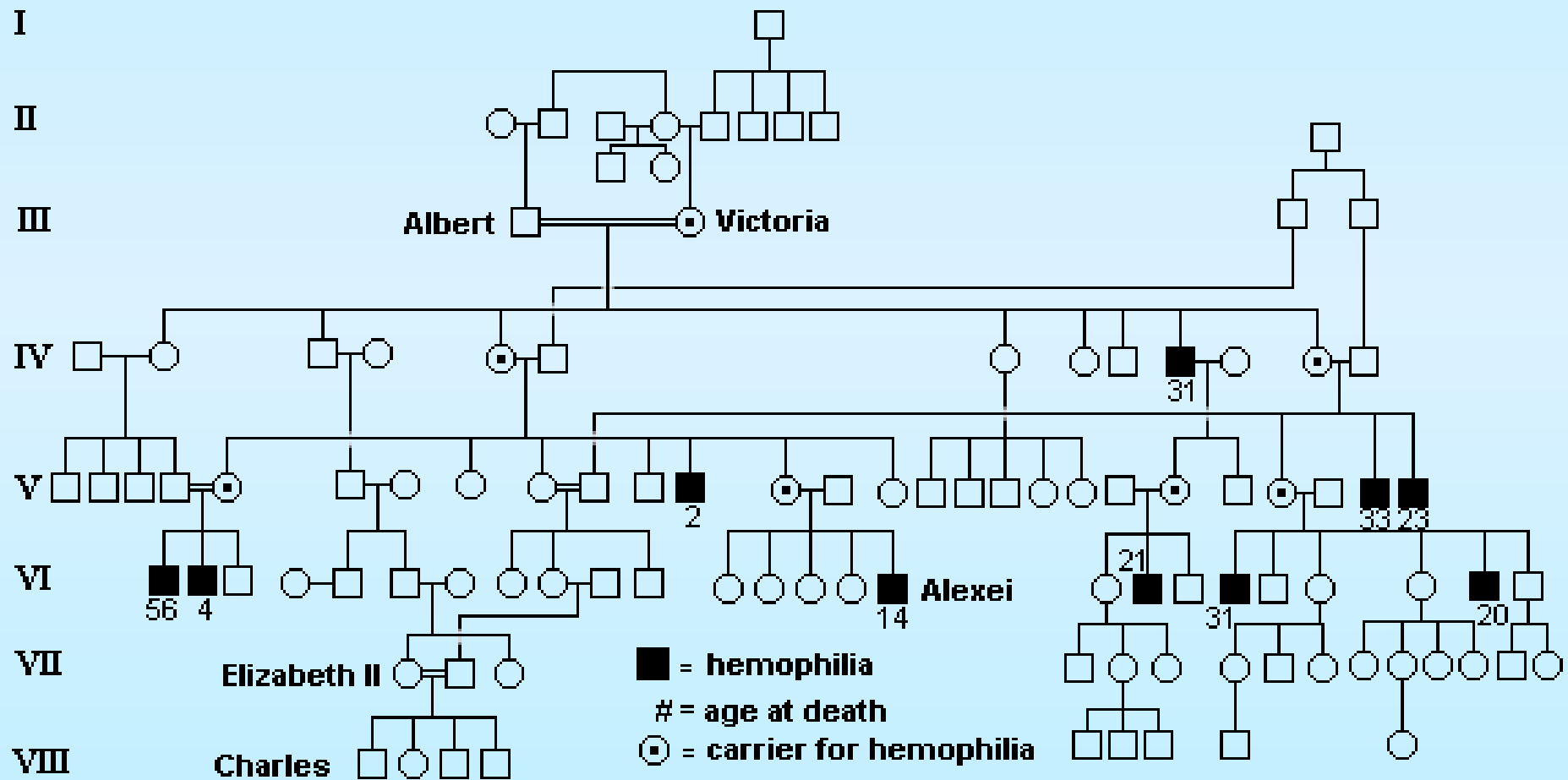


nevlastní
sourozenci



LEGENDA:

KRÁLOVSKÁ HEMOFILIE



Str. 16, úkol č. 1

Our Family Tree

